

StarBoard WT-1

INTERACTIVE WIRELESS TABLET



Interact Anywhere, Anytime

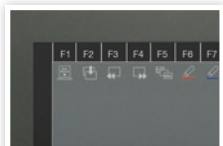
The StarBoard WT-1 is a lightweight graphics tablet that enables you to control your lessons or presentations from anywhere in the room. Featuring Wi-Fi technology, the new WT-1 is easy to install and simple to operate.

Wireless Control



With WT-1 you can comfortably control your lessons, presentations and software applications up to 10 meters away from your computer.

Simple to Operate



The WT-1 features 16 function buttons and an electronic wireless pen to ensure easy control of interactive whiteboard from anywhere in the room.

Involve the Audience

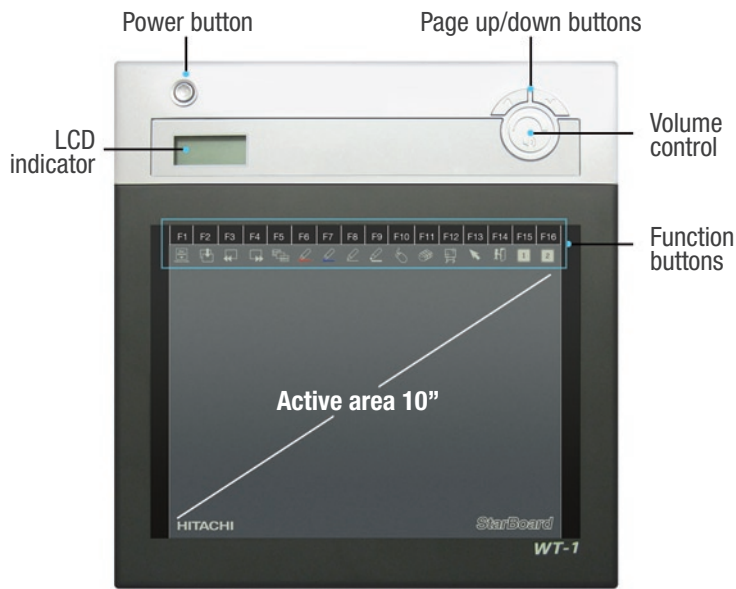


The device can be passed around the classroom or group members to contribute to lessons, training sessions or meetings without leaving their seat.

Parallel Usage



Up to 7 devices can be connected to one PC at the same time for interactive group work.



Key features

- Up to 16 hours of wireless operations
- Recharge battery via USB or AC adaptor
- Wireless pen with 2 customizable buttons
- Supports multiple pairing up to 7 devices
- 16 function buttons
- Built-in LCD indicator panel
- Rolling area for volume control
- Enabled for simultaneous viewing and annotation by multiple systems

Accessories



Electronic pen



2.4G RF Adaptor

Stand alone StarBoard software bundled in option



- Variety of digital inks
- Hand writing recognition
- Import Microsoft Office files
- Export notes to various file formats
- Search engine integration

Specifications WT-1

Model No.
StarBoard WT-1
(NWT-101, NWT-101R), AH00222

Input Methods
Electromagnetic induction

Interface to Computer
Wireless 2.4G RF

Active area size (mm)
203,2 (W) x 152,4(H)

Dimensions (mm)
278 (W) x 265 (H) x 23 (D)

Weight
590g

Sampling Rate
120 points/s

Resolution
2000Lpi

Function button
16 buttons

Hot key
1 (for pairing)

Power supply
Li-ion rechargeable battery
(Unremovable)

Battery usage time
16 hours (Continuous use)

Operating Specification
+10 - +35 Celsius

Safety Standard approvals
CE, FCC

Packing dimension (mm)
298 (W) x 298 (H) x 45 (D)

Electronic Pen

Model No.
WT1-M0201

Battery
AAA battery x 1 (1.5V)

Battery life
Approximately 1680 hours

Proximity
10mm

Pen feature
On/Off switch, Low battery Indicator
LED

2.4G RF Adaptor (enclosed)

Model No.
NWT-101R

Interface to Computer
USB 1.1

RF range
Up to 10m (limited condition)

Power
USB bus power (LED indicator for
checking power status)

Dimensions (mm)
20 (W) x 9.4 (H) x 47.8 (D)

Weight
10g

AC Adaptor (enclosed)

Input
AC100~240V, 47Hz~63Hz, 0.15A

Output
5VDC, 0.5A

System Requirements
based on StarBoard Software 8.13

Computers
CPU: Pentium 4 1.8GHz; RAM:
512MB; HDD 200MB of free
space; Internet Explorer 6/7/8;
Microsoft Office 2002/2003/2007;
Adobe Acrobat Reader 5.05; Adobe
Reader 6/7/8/9; Microsoft Visio
2002/2003/2007; Microsoft Project
2002/2003; Microsoft DirectX 9.0c
or higher; Window Media Encoder
9.0;

Windows Operating System
Microsoft Windows 2000, Microsoft
Windows XP(32bits), Microsoft
Windows Vista(32bits), Microsoft
Windows 7(32bits) (latest service
pack recommended)

Other Operating System
Please contact local office about
MAC, Linux support

StarBoard Software
StarBoard Software 8.13 or higher

Tablet driver
Pen pad driver version 8.13 or
higher

**Hitachi Software Engineering
France SAS
Interactive Media Solutions Division**
64, rue du Dessous des Berges,
75 013 Paris, France
Tel: +33 (0)153 827 600
Fax: +33 (0)153 827 619
Email: starboard@hitachisoft-eu.com

**Hitachi Software Engineering
(UK) Limited
Interactive Media Solutions Division**
Hillgate House, 26 Old Bailey,
London EC4M 7HW, United Kingdom
Tel: +44 (0)207 246 6868
Fax: +44 (0)207 246 6860
Email: sales@hitachi-software.co.uk

**Hitachi Software Engineering
Europe AG
Interactive Media Solutions Division**
Kurfürstendamm 22,
D-10719 Berlin, Germany
Tel: +49 (0)30 8877 2600
Fax: +49 (0)30 8877 2610
Email: starboard@hitachisoft.de

www.hitachisoft-eu.com

Authorized reseller



Hitachi sets
"Environmental Vision 2025"
www.hitachi.com/environment/

StarBoard